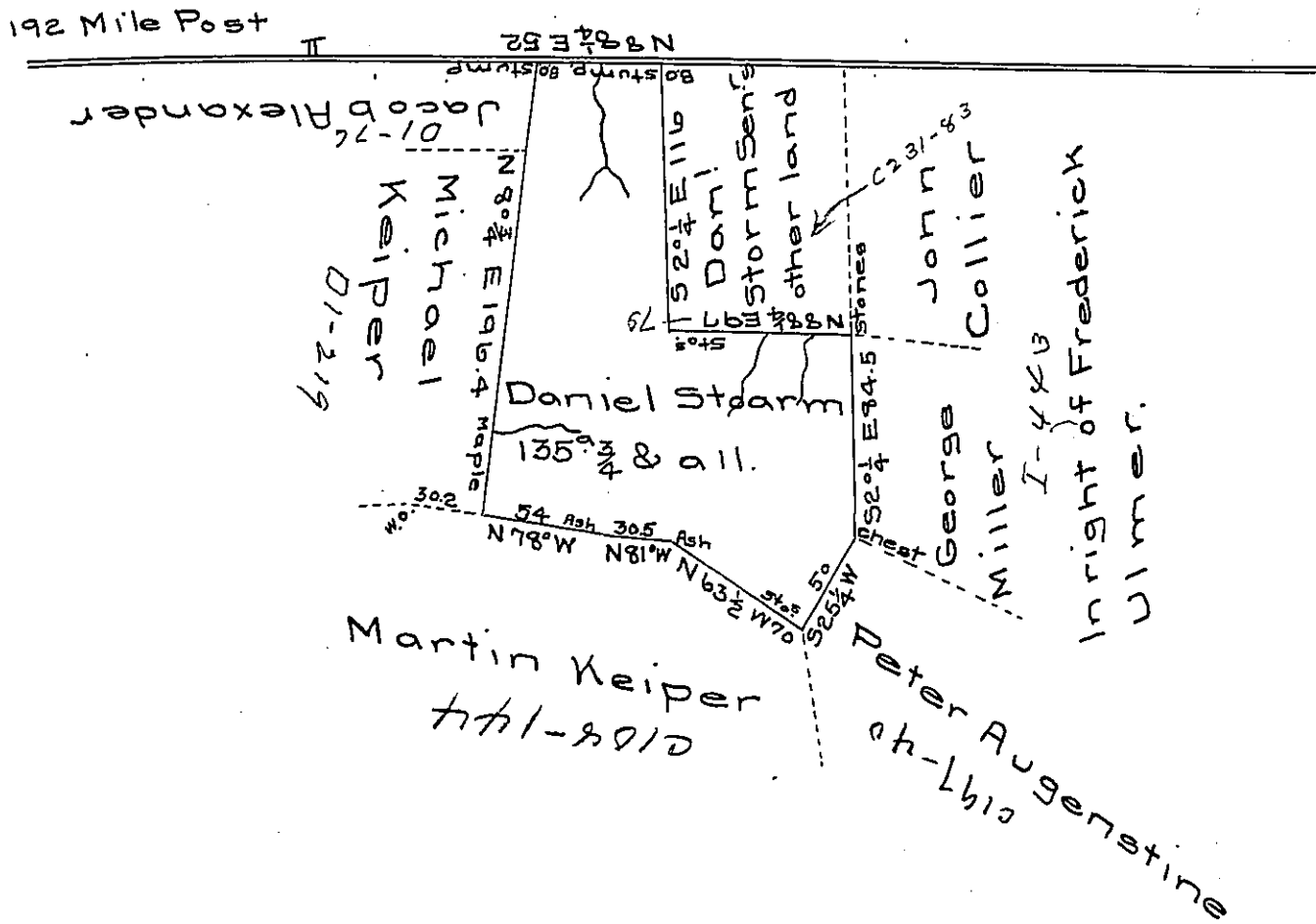


Maryland

Province Line



Situate adjoining the Province line in Addison township Somerset County and surveyed the 20th day of June 1797 by Alexander McClean Esquire late deputy Surveyor in pursuance of a warrant dated the 20th day of May 1797.

And certified the 9th day of May 1802:

John McClean Deputy

To Samuel Cochran Esquire
Surveyor General

IN TESTIMONY that the above is a copy of the original remaining on file in the Department of Internal Affairs of Pennsylvania, made conformably to an Act of Assembly approved the 16th day of February 1833, I have hereunto set my hand and caused the Seal of said Department to be affixed at Harrisburg, this eighth day of March 1907.

Spencer Brown
Secretary of Internal Affairs.